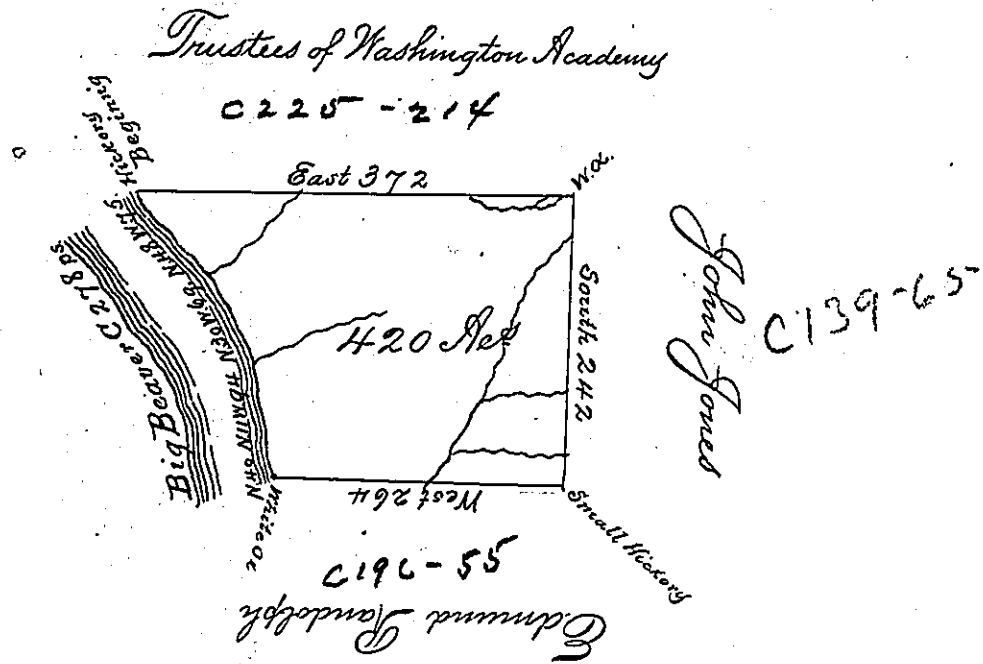


✓



The above is a draught of a survey made the 13th of February 1795 in pursuance of a Warrant Granted to Ann Duncan for 400 acres of Land Dated the 14th of April 1792. Situate North and West of the River Ohio on the East Bank of Big Beaver Creek adjoining Land Granted to Edmund Randolph near the mouth of Conaquesnessing Creek called Maypole containing four Hundred and twenty acres and the usual allowance of six p^{ct} Cent

Jonathan Leet De

To Dan^l Brodhead Esq^r
Surveyor Gen^l

IN TESTIMONY that the above is a copy of the original remaining on file in the Department of Internal Affairs of Pennsylvania, made conformably to an Act of Assembly approved the 16th day of February, 1833, I have hereunto set my Hand and caused the Seal of said Department to be affixed at Harrisburg, this sixth day of September 1898.

James W. Latta
Secretary of Internal Affairs.

